

# TROMBONE BASICS

Dr. Thomas Zugger  
Professor of Trombone and Euphonium  
Capital University Conservatory of Music

## I. Long Tones and Breathing Exercises

•Focus on deep low, FULL, relaxed inhale and a smooth, powerful, relaxed exhale

♩ = 50

Musical notation for breathing exercises in 4/4 time. The staff shows a sequence of notes with slurs and labels: INHALE, EXHALE, INHALE EXHALE, INHALE EXHALE, INHALE EXHALE, INHALE EXHALE, IN OUT IN, and CONTINUOUS LONG EXHALE....

### Ia. Long Tones

- Keep a steady tempo and a straight level tone
- Connect pitches under slurs, no spaces
  - Practice at a variety of dynamic levels
- Breathe after each two measures ♩ = 50

Musical notation for long tones exercise 1, starting on G2 and moving up stepwise to G3.

Musical notation for long tones exercise 2, starting on G2 and moving up stepwise to G3.

Musical notation for long tones exercise 3, starting on G2 and moving up stepwise to G3.

Musical notation for long tones exercise 4, starting on G2 and moving up stepwise to G3.

Musical notation for long tones exercise 5, starting on G2 and moving up stepwise to G3.

# TROMBONE BASICS

Dr. Thomas Zugger  
Professor of Trombone and Euphonium  
Capital University Conservatory of Music

## II. SLOW slurs

- Connect the slurs with AIR
- First time play on mouthpiece(balance mthpc on thumb, no fingers), gliss smoothly from one pitch to the next
- Play on horn second time, very smooth and connected
- Practice at a variety of dynamic levels
- Even tone on each pitch, mouthpiece or horn

♩ = 50

Three staves of musical notation in bass clef, 4/4 time. The first staff begins with a tempo marking of ♩ = 50. Each staff contains a sequence of notes with slurs, including some with accents and fermatas. The notes are: Staff 1: G<sub>2</sub>, F<sub>2</sub>, E<sub>2</sub>, D<sub>2</sub>, C<sub>2</sub>, B<sub>1</sub>, A<sub>1</sub>, G<sub>1</sub>. Staff 2: G<sub>2</sub>, F<sub>2</sub>, E<sub>2</sub>, D<sub>2</sub>, C<sub>2</sub>, B<sub>1</sub>, A<sub>1</sub>, G<sub>1</sub>. Staff 3: G<sub>2</sub>, F<sub>2</sub>, E<sub>2</sub>, D<sub>2</sub>, C<sub>2</sub>, B<sub>1</sub>, A<sub>1</sub>, G<sub>1</sub>.

## Ia. Longer Slow Slurs

- Connect with AIR
- Play on horn both times
- First time as written
- Second time reverse direction of each group

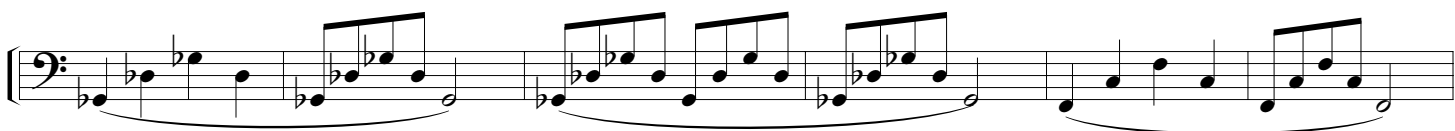
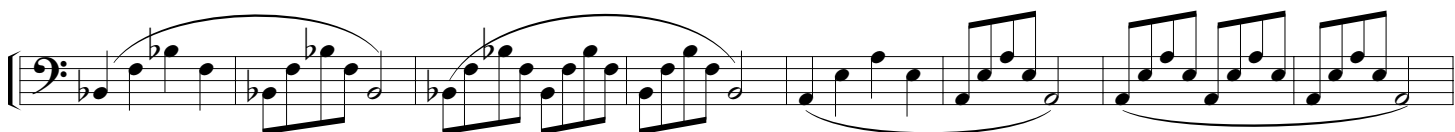
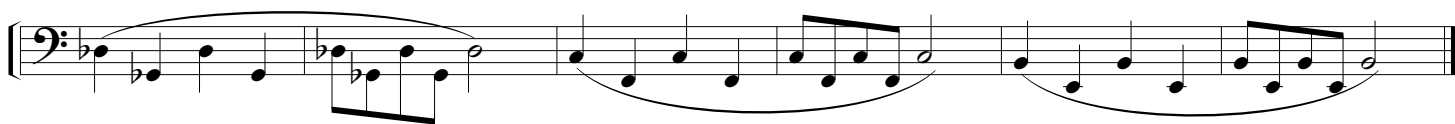
Three staves of musical notation in bass clef, 4/4 time. Each staff contains a sequence of notes with long slurs, including some with accents and fermatas. The notes are: Staff 1: G<sub>2</sub>, F<sub>2</sub>, E<sub>2</sub>, D<sub>2</sub>, C<sub>2</sub>, B<sub>1</sub>, A<sub>1</sub>, G<sub>1</sub>. Staff 2: G<sub>2</sub>, F<sub>2</sub>, E<sub>2</sub>, D<sub>2</sub>, C<sub>2</sub>, B<sub>1</sub>, A<sub>1</sub>, G<sub>1</sub>. Staff 3: G<sub>2</sub>, F<sub>2</sub>, E<sub>2</sub>, D<sub>2</sub>, C<sub>2</sub>, B<sub>1</sub>, A<sub>1</sub>, G<sub>1</sub>.

# TROMBONE BASICS

Dr. Thomas Zuger  
Professor of Trombone and Euphonium  
Capital University Conservatory of Music

## III. FLEXIBILITY STUDIES

- Practice slowly and correctly then speed up
- Practice on mouthpiece at least one exercise per day
- Focus on making slurs smooth and rhythmically even, not fast



First musical staff in bass clef, featuring a sequence of eighth notes with slurs and accents.

Second musical staff in bass clef, continuing the eighth-note sequence with slurs and accents.

Third musical staff in bass clef, showing a transition from eighth notes to a quarter note with a fermata.

Fourth musical staff in bass clef, featuring eighth notes with slurs and accents.

Fifth musical staff in bass clef, continuing the eighth-note sequence with slurs and accents.

Sixth musical staff in bass clef, showing eighth notes with slurs and accents.

Seventh musical staff in bass clef, featuring eighth notes with slurs and accents, and the number '3' below the notes.

Eighth musical staff in bass clef, continuing the eighth-note sequence with slurs and accents, and the number '3' below the notes.

Ninth musical staff in bass clef, featuring eighth notes with slurs and accents, and the number '3' below the notes.

Tenth musical staff in bass clef, showing eighth notes with slurs and accents, and the number '3' below the notes.

First musical staff in bass clef, featuring a sequence of six triplet eighth notes. The notes are G2, F2, E2, D2, C2, and B1. A slur covers the entire sequence, with a '3' below each note.

Second musical staff in bass clef, featuring a sequence of six triplet eighth notes. The notes are B1, A1, G1, F1, E1, and D1. A slur covers the entire sequence, with a '3' below each note.

Third musical staff in bass clef, featuring a sequence of six triplet eighth notes. The notes are C2, D2, E2, F2, G2, and A2. A slur covers the entire sequence, with a '3' below each note.

Fourth musical staff in bass clef, featuring a sequence of six triplet eighth notes. The notes are B1, A1, G1, F1, E1, and D1. A slur covers the entire sequence, with a '3' below each note.

Fifth musical staff in bass clef, featuring a sequence of six triplet eighth notes. The notes are C2, D2, E2, F2, G2, and A2. A slur covers the entire sequence, with a '3' below each note.

Sixth musical staff in bass clef, featuring a sequence of six triplet eighth notes. The notes are B1, A1, G1, F1, E1, and D1. A slur covers the entire sequence, with a '3' below each note.

Seventh musical staff in bass clef, featuring a sequence of six triplet eighth notes. The notes are C2, D2, E2, F2, G2, and A2. A slur covers the entire sequence, with a '3' below each note.

Eighth musical staff in bass clef, featuring a sequence of six triplet eighth notes. The notes are B1, A1, G1, F1, E1, and D1. A slur covers the entire sequence, with a '3' below each note.

Ninth musical staff in bass clef, featuring a sequence of six triplet eighth notes. The notes are C2, D2, E2, F2, G2, and A2. A slur covers the entire sequence, with a '3' below each note.

Tenth musical staff in bass clef, featuring a sequence of six triplet eighth notes. The notes are B1, A1, G1, F1, E1, and D1. A slur covers the entire sequence, with a '3' below each note.

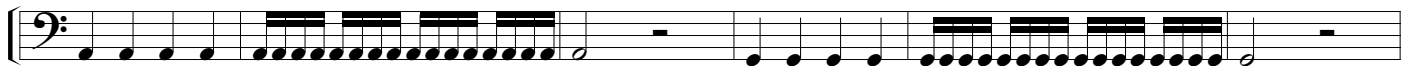
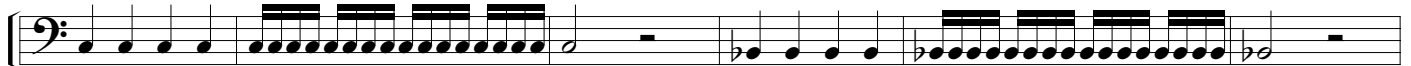
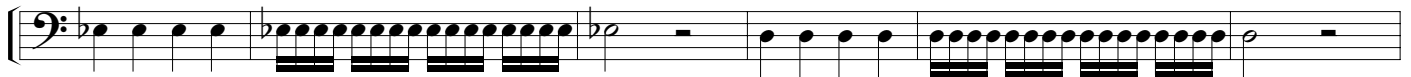
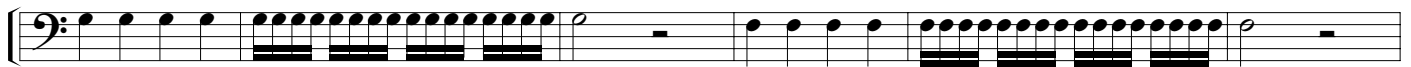
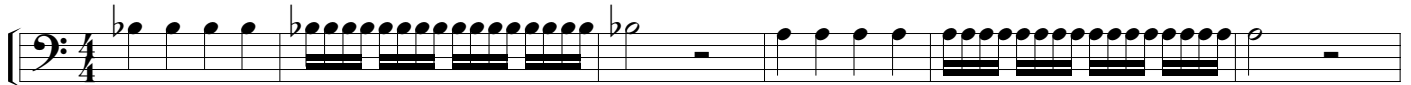


# TROMBONE BASICS

Dr. Thomas Zugger  
 Professor of Trombone and Euphonium  
 Capital University Conservatory of Music

## IV. ARTICULATION EXERCISES

- Stay relaxed and BLOW the tongue out of the way
- Practice DAILY to build speed and endurance



•Quick slide

•Relax and BLOW tongue out of the way

The first staff shows a sequence of eighth notes in a major key, followed by a key change to a minor key. The second staff continues with similar patterns, including a key change to a major key with a sharp. The third staff features a key change to a minor key with a flat. The fourth staff shows a key change to a major key with a sharp. The fifth staff continues with a key change to a minor key with a flat. The sixth staff shows a key change to a major key with a sharp. The patterns consist of eighth notes, some beamed together, and some with accidentals.

## IVa Triad Exercise

- LONG BUT ARTICULATED
- Tune each triad as you play
- Make every articulation identical
- Be consistent

The first staff shows a sequence of triad patterns in a major key, followed by a key change to a minor key. The second staff continues with similar patterns, including a key change to a major key with a sharp. The third staff features a key change to a minor key with a flat. The patterns consist of eighth notes, some beamed together, and some with accidentals. Some notes are marked with a fermata.



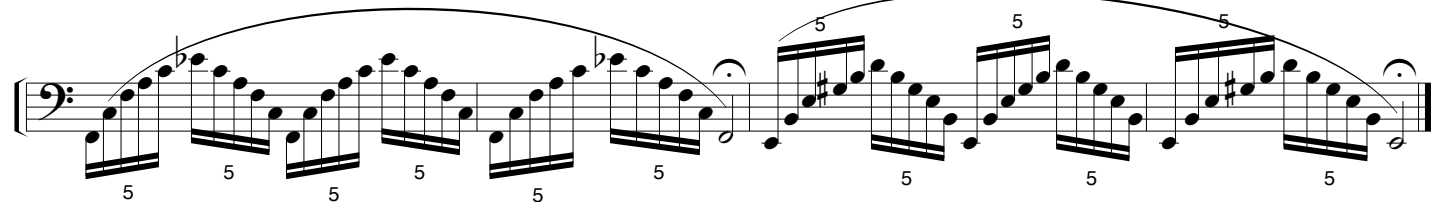
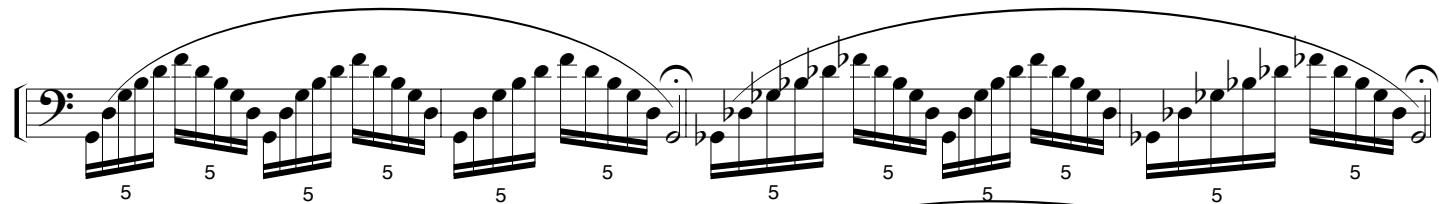
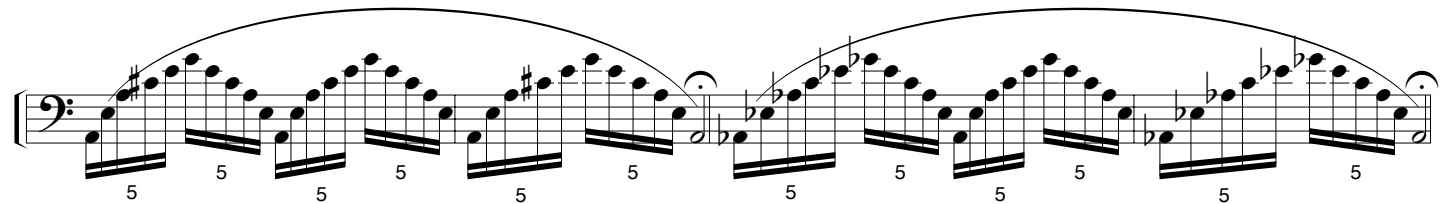
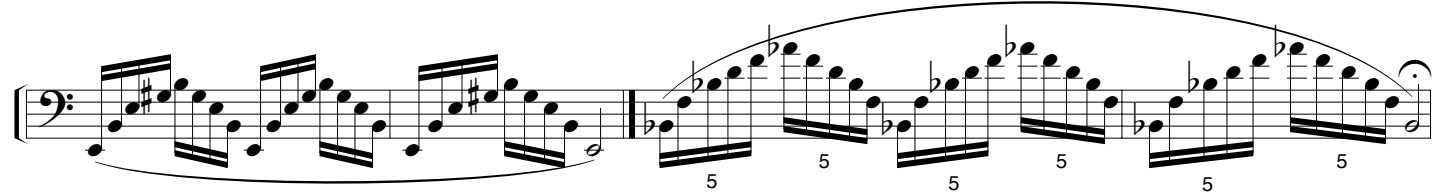
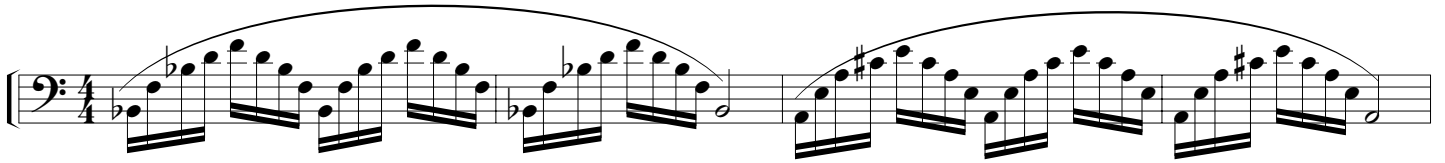


# TROMBONE BASICS

Dr. Thomas Zugger  
Professor of Trombone and Euphonium  
Capital University Conservatory of Music

## V. Range Exercises

- Slurs MUST be smooth, rhythmic and even
- Keep relaxed. Rest mouthpiece against lips, do not push
- Fast, full air stream



First musical staff in bass clef. It contains three measures of music, each with a slur over a triplet of eighth notes. The notes are: G2 (b), A2 (b), B2 (b), C3, D3, E3, F3, G3, A3, B3, C4. The first measure has a flat on the first note, the second has flats on the first two notes, and the third has flats on the first three notes. Each measure is marked with a '3' below it.

Second musical staff in bass clef. It contains three measures of music, each with a slur over a triplet of eighth notes. The notes are: G2 (b), A2 (b), B2 (b), C3, D3, E3, F3, G3, A3, B3, C4. The first measure has a sharp on the second note, the second has a sharp on the second note, and the third has a sharp on the second note. Each measure is marked with a '3' below it.

Third musical staff in bass clef. It contains three measures of music, each with a slur over a triplet of eighth notes. The notes are: G2 (b), A2 (b), B2 (b), C3, D3, E3, F3, G3, A3, B3, C4. The first measure has flats on the first two notes, the second has flats on the first three notes, and the third has flats on the first three notes. Each measure is marked with a '3' below it.

Fourth musical staff in bass clef. It contains three measures of music, each with a slur over a triplet of eighth notes. The notes are: G2 (b), A2 (b), B2 (b), C3, D3, E3, F3, G3, A3, B3, C4. Each measure is marked with a '3' below it.

Fifth musical staff in bass clef. It contains three measures of music, each with a slur over a triplet of eighth notes. The notes are: G2 (b), A2 (b), B2 (b), C3, D3, E3, F3, G3, A3, B3, C4. Each measure is marked with a '3' below it.

Sixth musical staff in bass clef. It contains three measures of music, each with a slur over a triplet of eighth notes. The notes are: G2 (b), A2 (b), B2 (b), C3, D3, E3, F3, G3, A3, B3, C4. Each measure is marked with a '3' below it.

Seventh musical staff in bass clef. It contains three measures of music, each with a slur over a triplet of eighth notes. The notes are: G2 (b), A2 (b), B2 (b), C3, D3, E3, F3, G3, A3, B3, C4. Each measure is marked with a '3' below it.

Eighth musical staff in bass clef. It contains two measures of music, each with a slur over a triplet of eighth notes. The notes are: G2 (b), A2 (b), B2 (b), C3, D3, E3, F3, G3, A3, B3, C4. Each measure is marked with a '3' below it.

Ninth musical staff in bass clef. It contains two measures of music, each with a slur over a triplet of eighth notes. The notes are: G2 (b), A2 (b), B2 (b), C3, D3, E3, F3, G3, A3, B3, C4. Each measure is marked with a '3' below it.

A musical staff in bass clef with a complex melodic line. It features many accidentals (sharps, flats, naturals) and is divided into three sections by slurs. The first section has a descending line, the second is more rhythmic, and the third is ascending.

♩ = 50

A musical staff in bass clef containing a series of eighth notes. Each note is slurred to the next, and there are various accidentals (flats, naturals) throughout the line.

A musical staff in bass clef continuing the exercise with eighth notes and slurs, featuring various accidentals.

### Va. Low Range

•Use valve where indicated (V)

A musical staff in bass clef with eighth notes and slurs. Small 'V' markings are placed below the notes to indicate when to use a valve.

•This exercise all on valve side of horn

A musical staff in bass clef with eighth notes and slurs, including 'V' markings for valve use.

A musical staff in bass clef with eighth notes and slurs, continuing the exercise.

A musical staff in bass clef with eighth notes and slurs, ending with a fermata over the final note.

A musical staff in bass clef with eighth notes and slurs.

A musical staff in bass clef with eighth notes and slurs, ending with a fermata over the final note.

# TROMBONE BASICS

Dr. Thomas Zuger  
Professor of Trombone and Euphonium  
Capital University Conservatory of Music

## VI. Scale Exercises

- Scales MUST be in tune
- Practice SLOWLY until pitch and rhythm are correct
- Vary the articulation
  - 1st measure gliss
  - 2nd measure legato
  - 3rd measure normal articulation

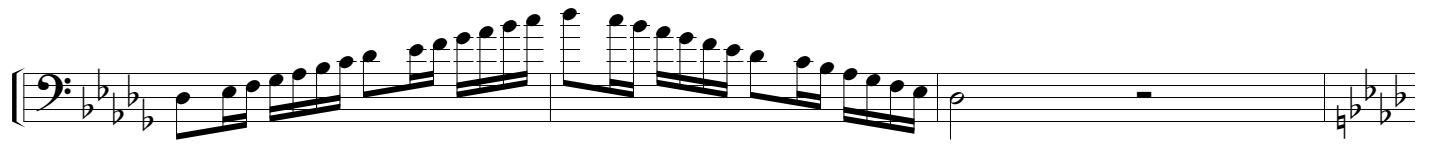




## Via. Two Octave Scales

- Same embouchure for all notes
- Fast air
- No pressure playing





## Vib. Scale Patterns

Play in all keys

Play all exercises with a variety of articulations

Play in all ranges

### Pattern 1



### Pattern 2



### Pattern 3



### Pattern 4



### Pattern 5



### Pattern 6



### Pattern 7

