

Double Tonguing Exercises

C Instruments

Basic Pattern

4

7

10 Baby Steps

ta ta ka ta ta ka ta ka ta ka ta

Isolate Syllables

14

tah tah tah tah tah tah tah tah tah tah tah

18

kah kah kah kah kah kah kah kah kah kah kah

Isolate Intervals

22

tah kah tah kah tah tah kah tah kah tah

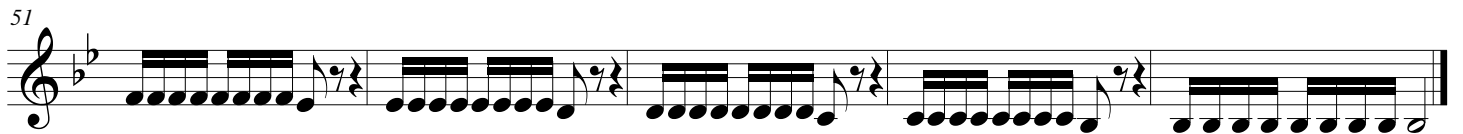
26

tah kah tah kah tah tah kah tah kah tah

2
30 Exercise A



39 Exercise B



Exercise C



Exercise D

71



79



Exercise D consists of two staves of music in 2/4 time, key of B-flat major. The first staff (measures 71-78) features a sequence of eighth-note patterns: four eighth notes, followed by eighth notes with beams, and eighth notes with beams and slurs. The second staff (measures 79-86) continues with similar eighth-note patterns, including some with slurs and beams.

87 Exercise E



Exercise E is a single staff of music in 3/4 time, key of B-flat major. It contains five measures of eighth-note patterns, including some with beams and slurs.

Exercise F

92



96



100



Exercise F consists of three staves of music in 4/4 time, key of B-flat major. The first staff (measures 92-95) shows eighth-note patterns with beams and slurs, followed by a whole rest. The second staff (measures 96-99) continues with eighth-note patterns and a whole rest. The third staff (measures 100-103) features eighth-note patterns with beams and slurs, and a whole rest.

Congratulations on completing these exercises!